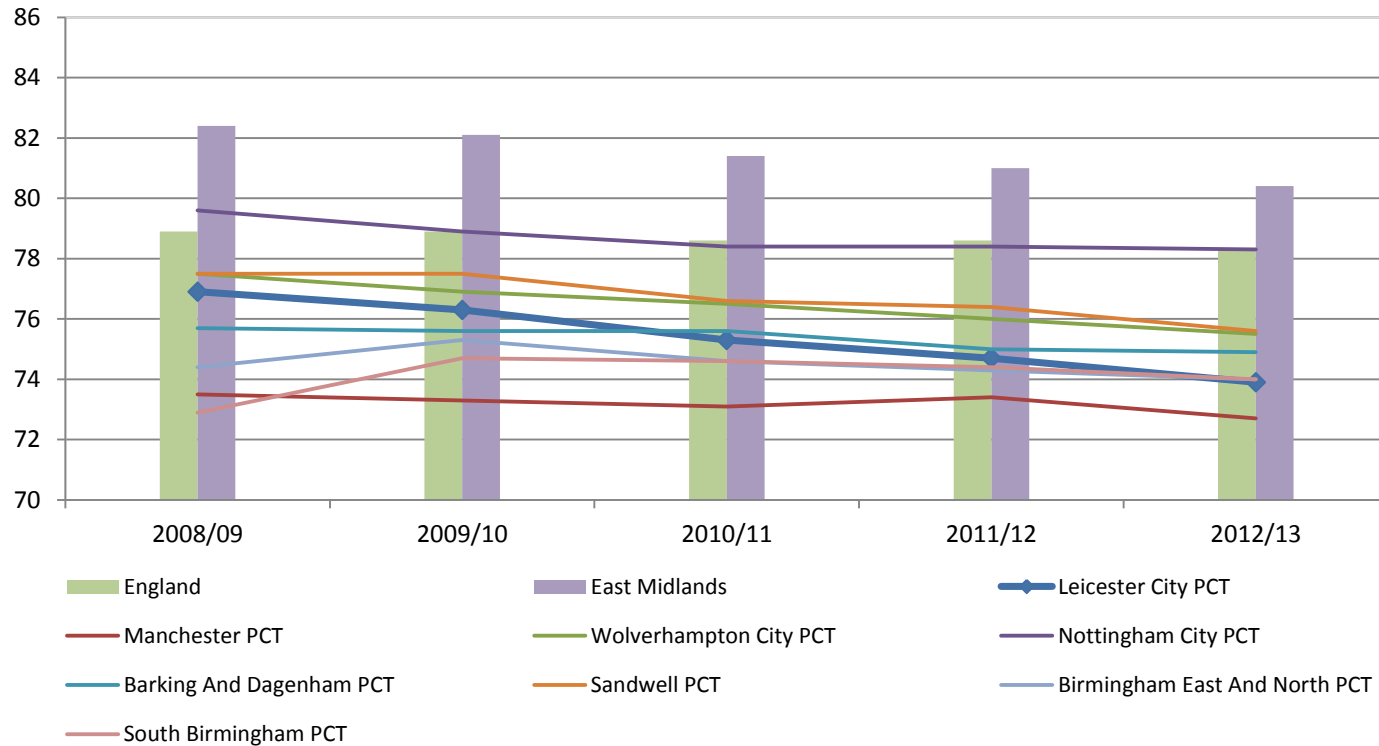
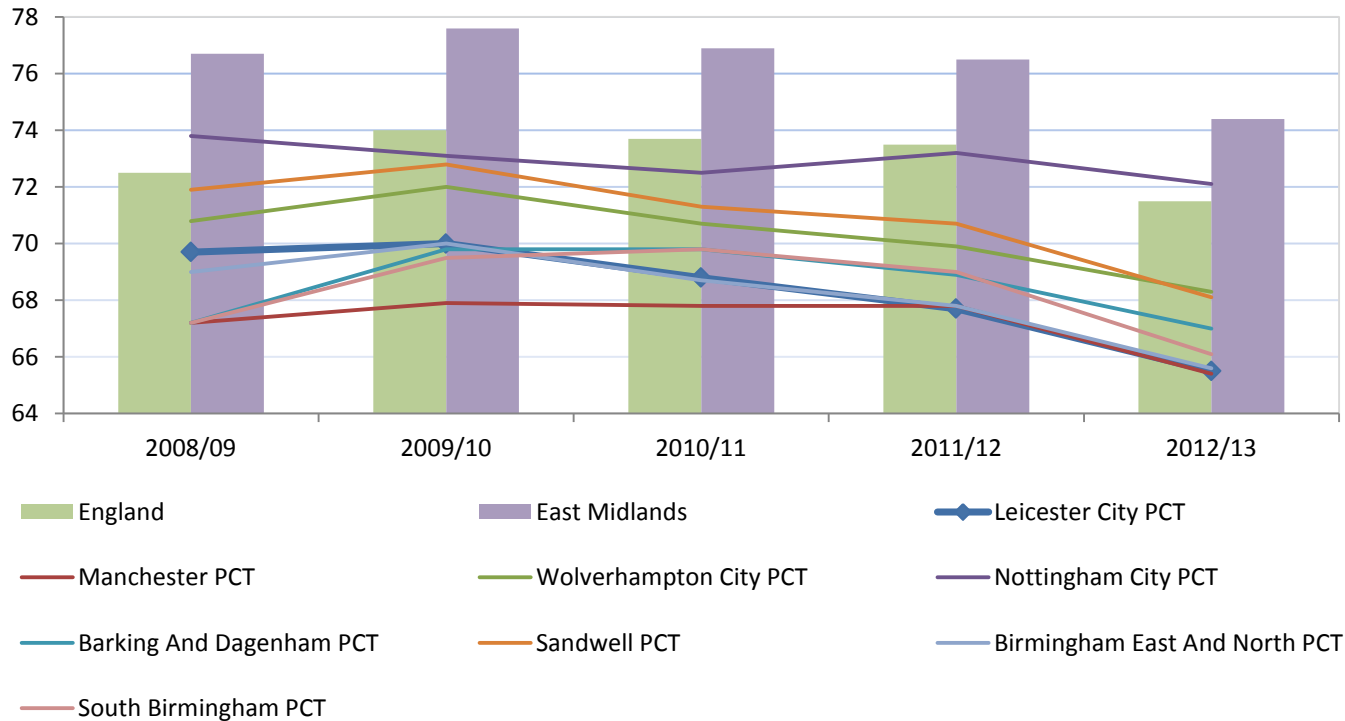


Uptake for cervical screening, 25-64 yrs, for Leicester City, England, East Midlands and peer areas



Most areas have seen a decline in uptake over time, Leicester City experience is similar to its peers.

Uptake for cervical screening, 25-49 yrs, for Leicester City, England, East Midlands and peer areas



Similar pattern when looking at younger age group except Leicester City is now near the bottom of its peer group

Explanation and actions

- There is no single reason for this, it is not as simple as saying it is the result of low uptake in BME groups for example.
- The introduction of the HPV immunisation in teenage girls is believed to have had an effect on people's thinking about cervical screening but it may also be a reflection of the general attitude to sexual health which is seeing a rise in STDs.
- A multiagency LLR Health Promotion Steering Group has been established by the Area Team's screening and immunisation team – the following actions have been agreed.
 - Resource packs to be sent out to all GP practices, containing information on all adult screening programmes
 - Screening & Immunisation Team will be sharing quarterly practice data with the CCGs , to enable low uptake monitoring
 - Developing an anticipatory calendar linked to national campaigns, and working to formalise links with communication teams across the health community
 - Reviewing all adult screening programme content / patient information available on the following websites – CCGs, UHL, Leicester City and County Councils
 - Explore how the Screening & Immunisation Team link into the Quality, Engagement & Development Programme that is being rolled out by the City CCG
- The local authorities commission sexual health services, it is critical that cervical screening continues to be available through sexual health and family planning services